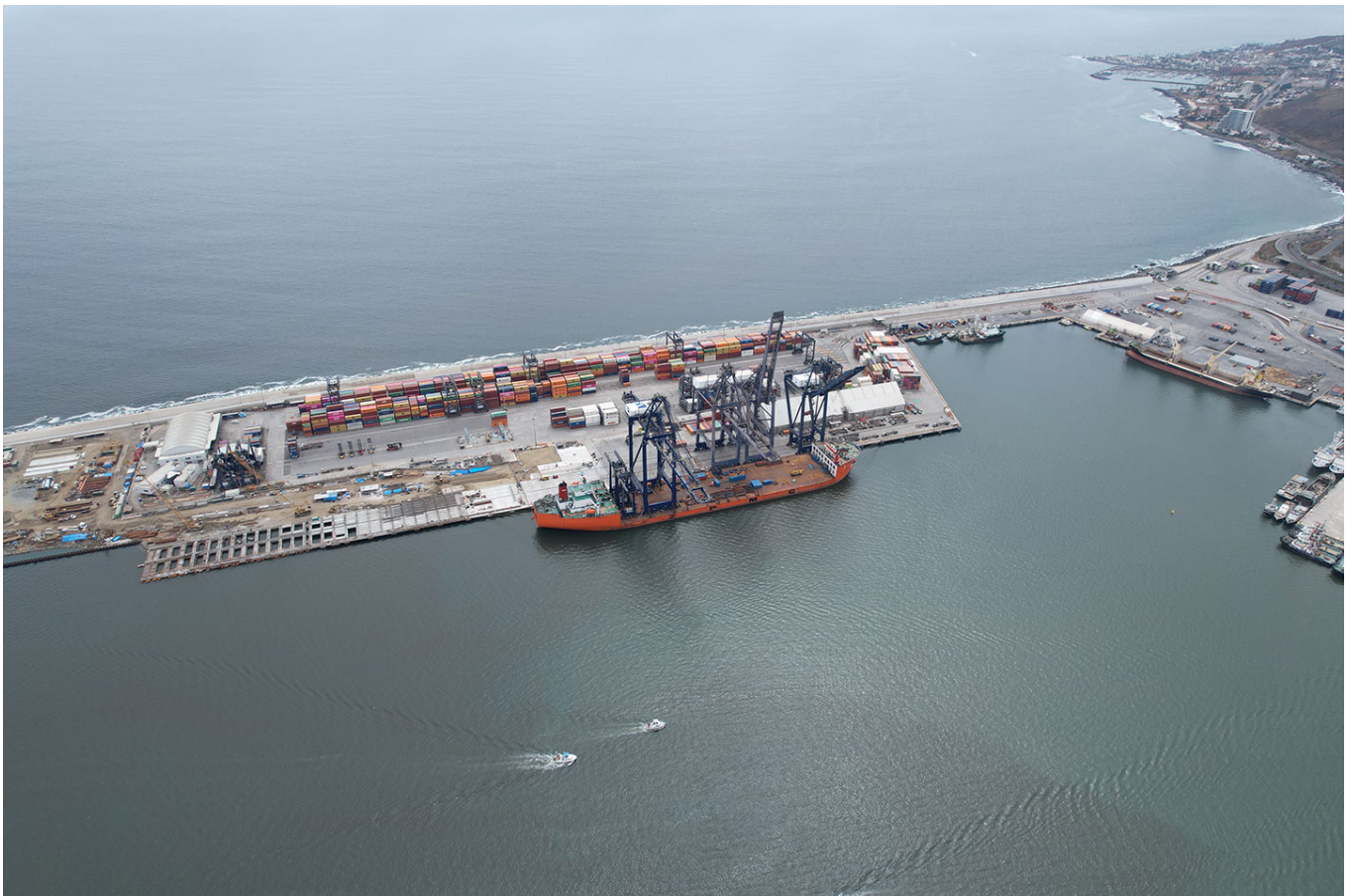


Jun 2024

## ENSENDA EXPANDS HANDLING CAPACITY WITH NEW EQUIPMENT INSTALLED

Winter 2024 / Spotlight / Smart Tech  
Business Unit: HUTCHISON PORTS EIT

Hutchison Ports EIT has recently expanded its handling capacity at the Ensenada Port terminal in Mexico. The project includes the extension of the quay by 300 metres which allows an addition of 432 container connections, totalling 720 metres; increasing yard capacity by 4 hectares and the construction of a new wave deflector wall.



EIT has also introduced the latest eco-friendly equipment to the terminal with the delivery of a super post Panamax Quay Crane and two electric rubber tyred gantry cranes (eRTGCs) in June 2024.



To learn more please click [here](#).



© 2025 HUTCHISON PORT HOLDINGS LIMITED. ALL RIGHTS RESERVED.